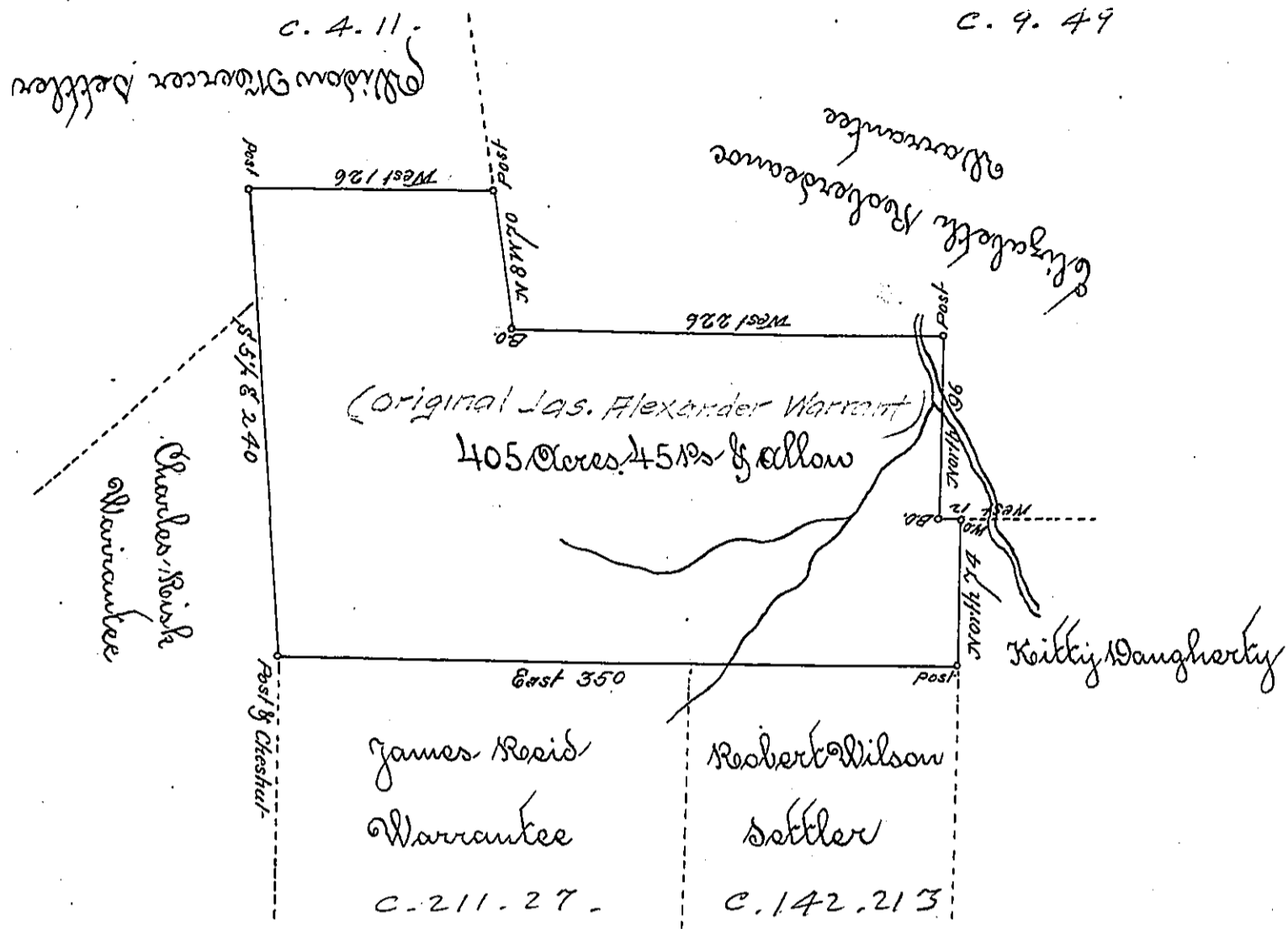


See →  
 C. 4. 12.  
 B. 11. 121.  
 C. 9. 49



The Above is a Draught of a tract of Land Surveyed May 3<sup>rd</sup> 1815 in pursuance of a warrant Granted to James Alexander Dated the 20<sup>th</sup> Day of February AD. 1815 Situate in South Beaver Township Beaver County Containing 405 acres & 45 perches & allowance of 6 p. Cent &c

I Hugh McCullough D. S. do hereby Officially Certify that the above is a true Copy taken from the Original as Recorded in Official Survey Book remaining in my Office

To Reich & S. Leech Esq<sup>r</sup> }  
 Surveyor General }

Hugh McCullough D. S.

IN TESTIMONY that the above is a copy of the original remaining on file in the Department of Internal Affairs of Pennsylvania, made conformably to an Act of Assembly approved the 16th day of February, 1833. I have hereunto set my Hand and caused the Seal of said Department to be affixed at Harrisburg, this

fourth day of February 1896.

James W. Fatta  
 Secretary of Internal Affairs.